



SWAN AGENCY PROUDLY INTRODUCES





38 OSPREY REACH RD, STOCKTON SPRINGS, MAINE

OFFERED AT \$1,190,000





Nestled in a private subdivision along the shores of Devereaux Cove, facing Fort Points State Park, 38 Osprey Reach Road is a gorgeous, light filled contemporary home surrounded by mature trees and walking trails, just steps off Coastal Route One and a short walk to the ocean by a right of way to a pebble beach.

A contemporary design throughout with Italian imported marble, stunning two story Great Room, open to the dining room, custom designed kitchen with state of the art Smeg appliances, induction cooktop, double ovens (including a gourmet pizza oven), custom cabinetry of the same design in all rooms, beautiful and carefully selected lighting; unique wall sconces and accent lighting throughout the home and an exceptional Great Room ceiling fan. Thoughtful, custom baseboard covers modernize the appearance perfectly. The TVs are Frame TV - Art Mode, displaying a variety of art when not in use.

The harmonious, intentional design from room to room offers a comfortable, designer showhouse feel.

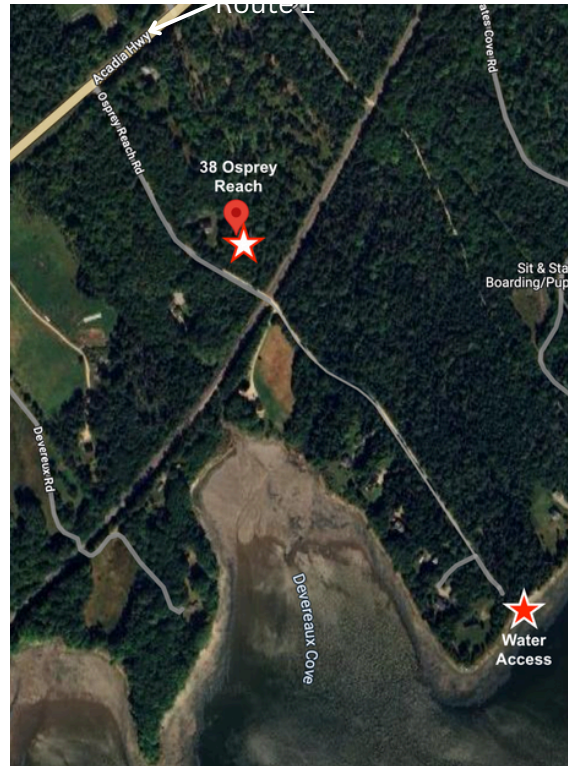


There is a first floor bedroom which doubles as an office with a nicely concealed Murphy bed, perfect for a guest who prefers not to manage stairs. There are two bedrooms on the 2nd floor, one primary with en-suite bathroom featuring a soaking tub, spacious marble and glass shower, double vanity and separate water closet. A beautiful infrared sauna, large workout room with commercial equipment, wine cellar and entertainment area with large screen TV complete the finished lower level. ***No design detail was overlooked!***



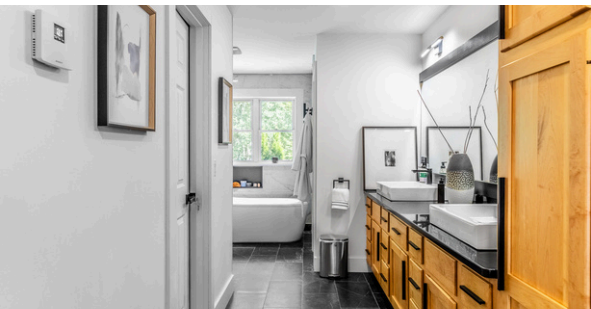
PROPERTY DATA

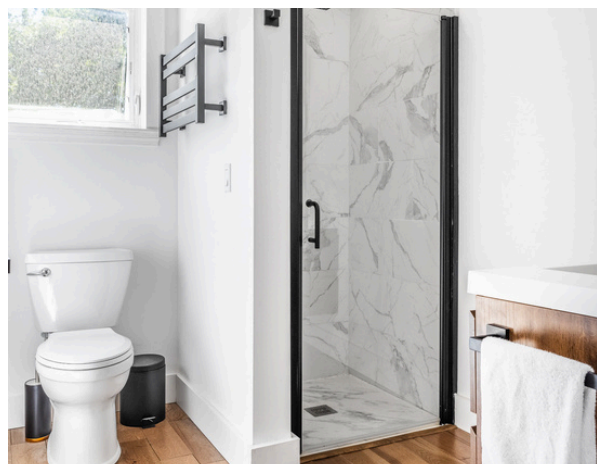
- 38 Osprey Reach Rd, Stockton Springs, ME 04981
- Lot size: 2.4 acres
- Shared water frontage, on Devereaux Cove
- Map 4, Lot 116
- Book 4319, Page 247, Waldo County Registry of Deeds
- 2023 -2024 Tax Bill: \$5,253
- Built in 2006
- Approx. 2,500 sf total
- 3 bedrooms, 2 1/2 baths (one is a first floor office with very discreet Murphy bed)
- Floors: hardwood, tile, luxury vinyl tile (LVT)
- Decks: 1st and 2nd floors
- Utilities: propane, private well and septic
- Heat: hot water baseboard and radiant
- Fireplace: propane
- Cooling: A/C units
- Hot Water: off heating system
- Roofing: composition shingle
- Exterior: vinyl siding
- Asphalt driveway, space for additional cars
- Vehicle Storage: Attached 2 car heated garage
- Basement: full, finished
- Foundation: poured concrete
- Generator
- Large ceiling fans, double pane windows, smart thermostats
- Lower Level has an exercise room, infrared sauna, wine cellar
- Conveys fully furnished





Murphy Bed in the Office





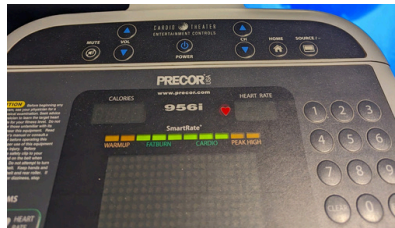
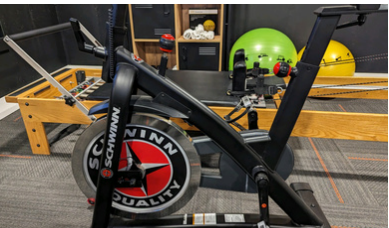
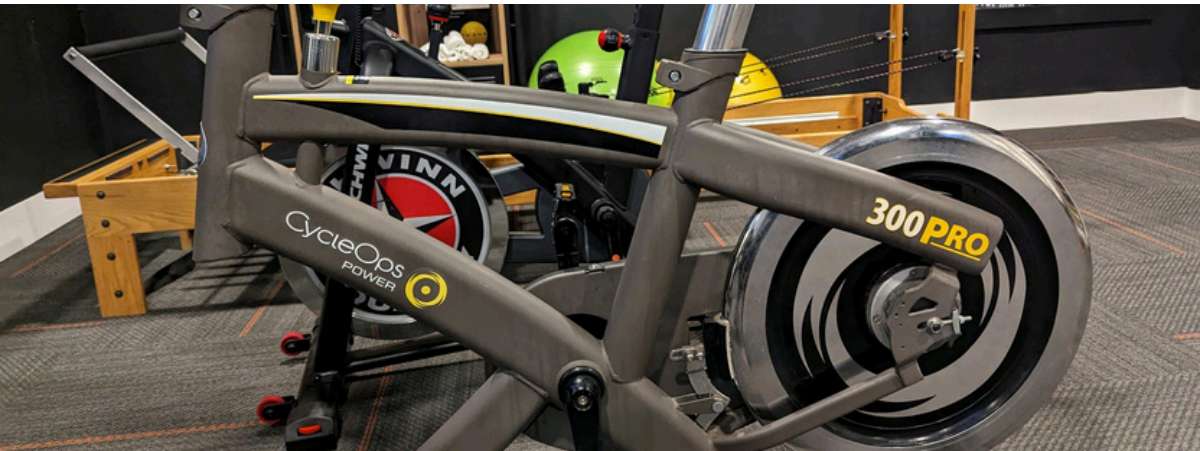
A PRIVATE RESIDENCE OR INVESTMENT RENTAL

Outdoor entertaining is fabulous at this home, with a spacious deck with ceiling fan, partially covered makes it ideal for sun or shade seekers. Osprey Reach has intentionally landscaped outdoor space to accommodate walking trails and a platform amongst the trees, ideal for quiet contemplation. The extensive workout room and sauna promote well being. Foraging mushrooms and the view from the decks are icing on the cake. This property offers it all!







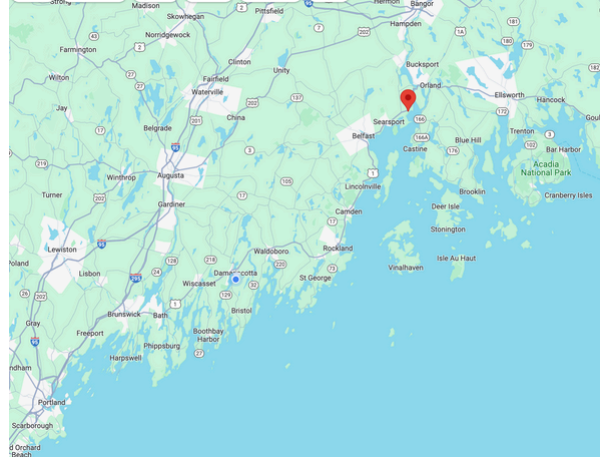




38 Osprey Reach Road is located:

- 5 miles from Searsport
- 12 miles from Belfast
- 23 miles from Blue Hill
- 25 miles from Ellsworth
- 25 miles from Bangor
- 30 miles from Camden
- 40 miles from Deer Isle
- 45 miles from Bar Harbor
- 55 miles from Augusta
- 70 miles from Boothbay Harbor
- 115 miles from Portland
- 130 miles from Moosehead Lake

A perfect location to hop around this beautiful state of Maine!



38 OSPREY REACH ROAD
STOCKTON SPRINGS, MAINE



COMPETITIVELY OFFERED AT \$1,190,000

For more information or to schedule a showing, contact Dana Moos 207-266-5604,
dana.moos@swanagency.com or Nancy McKechnie 207-478-5605 - nancy.mckechnie@swanagency.com